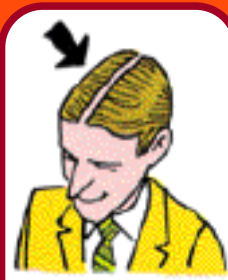


# Res et acta



sulcus comptus



horológium  
pariétinum /  
horológium  
armilläre



léctus



cervical



línteum



pública raeda



íanitor, oris m.



scríbere



légere



hirnea theána



ianua



spumífera lótio



unguis vernix



cómere



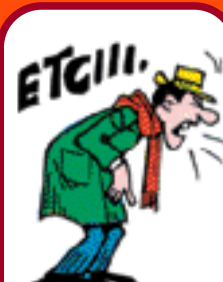
pécten



febrim habére



thermómetrum



gravédo



stadium



grandi gradu  
ambuläre



bulga



nummus



manducare



pétasus  
umbrósus